



FOR YOUTH DEVELOPMENT®  
FOR HEALTHY LIVING  
FOR SOCIAL RESPONSIBILITY

# SWING INTO SPRING MIXED DOUBLES PICKLEBALL SHOWDOWN

**SATURDAY, APRIL 27**

2:30 P.M. | 4.0 DIVISION  
MAXIMUM OF 16 TEAMS

**SATURDAY, MAY 18**

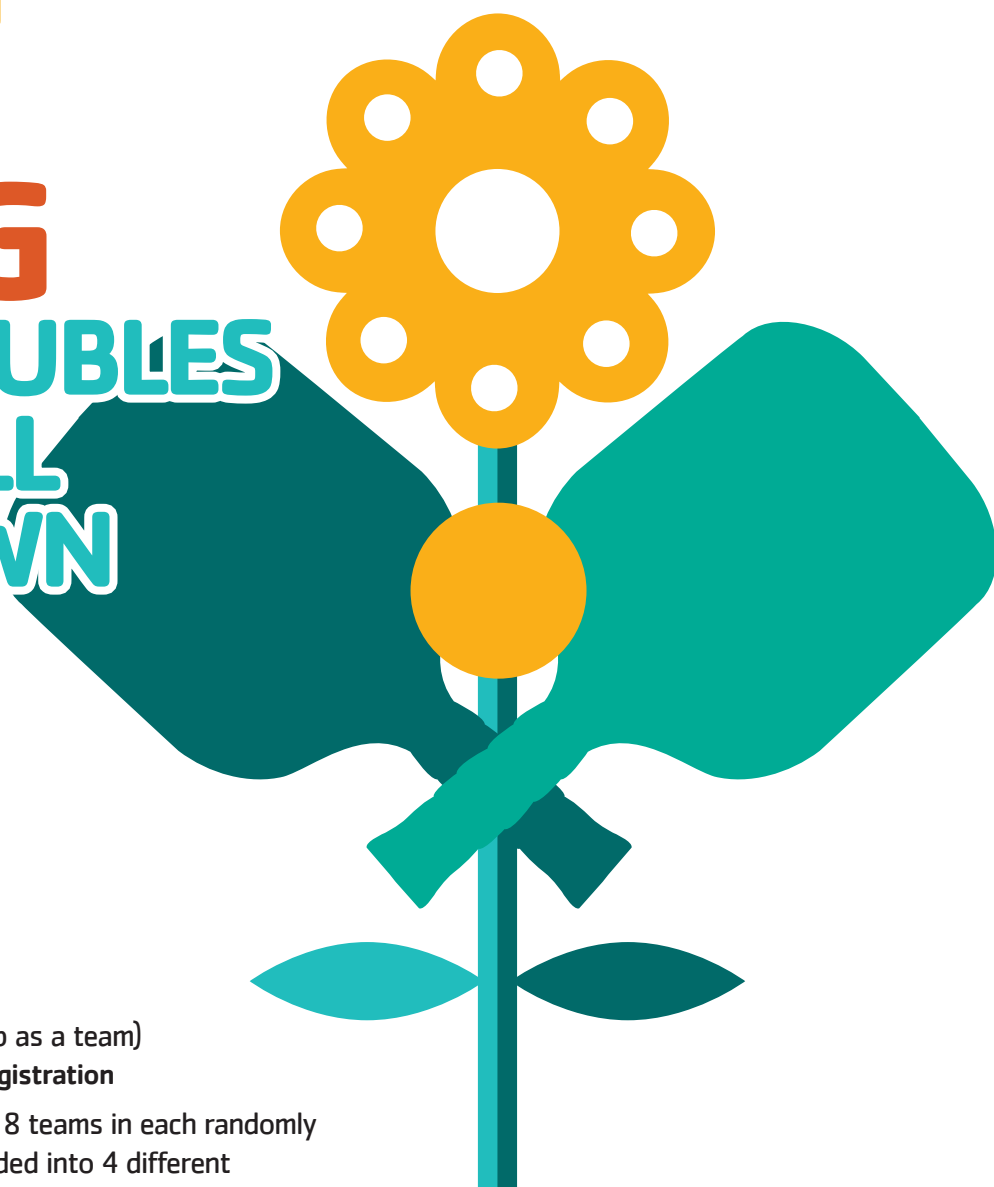
2:30 P.M. | 3.5 DIVISION  
MAXIMUM OF 16 TEAMS

**FEE \$25/person** (Must sign up as a team)

Payment must be made at the time of registration

We will play an initial round robin with 8 teams in each randomly selected pools. Teams will then be divided into 4 different brackets playing a round-robin in each bracket. Awards will be given to top two teams in top bracket and top team in other brackets. Format subject to change per sign up and Tournament Directors discretion. Details will be e-mailed out prior to tournament.

For more information and to register call 920-236-3400.  
Questions can be emailed to [sheilacounts@oshkoshymca.org](mailto:sheilacounts@oshkoshymca.org).



**RANDOM "SPRING"  
GIFTS WILL BE AWARDED  
THROUGHOUT THE  
TOURNAMENT!**